

KENWOOD

+

PORTRONIX® embedded GPS

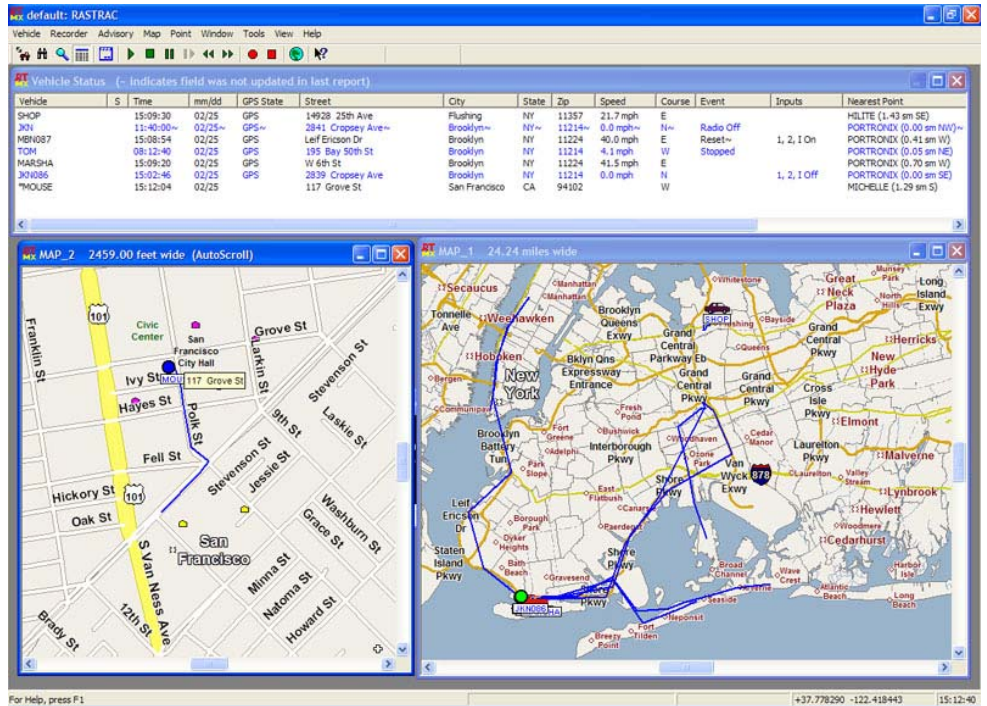
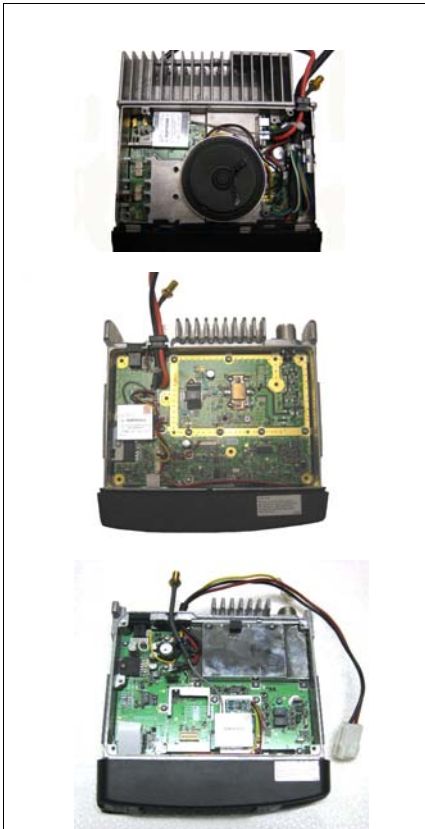
=

\$\$\$ Ka-CHING \$\$\$

Universal GPS module fits *inside* NX-xxx, TK-x80, TK-x160, TK-x180 and more

Easy installation. Just 3 wires connected to conveniently-marked points inside the radio. Reliable screw-on SMA antenna jack. Plug-in wiring connector.

Instructions, programming information, and pictures included with each order.



Actual screen-shot of RASTRAC AVL software

RASTRAC, along with Kenwood mobile radios and PGPS1 embedded GPS modules from Portronix, are a winning combination for both dealers and customers.

Many Kenwood radios feature FleetSync data signaling. Mobiles can provide GPS location information via manual polling, automatic updates, and/or microphone PTT. TKx180 series radios can send GPS location data alone, or along with Status messages, Emergency messages, and when external inputs are activated. PGPS1 modules requires no programming. All parameters are set within the radio using Kenwood programming software. There are no external GPS modem "boxes" or complicated installation requirements. Designed to also work with Kenwood KAS-10 and KGS-3 AVL / Dispatch software.

FleetSync data gets through, even when signals are too weak for normal voice communications. Fleet-owners who have GPS in their 2-way radios, use less airtime and operate more efficiently. They recommend their vehicle tracking system to new prospective clients. NOW is the time to offer GPS benefits to YOUR customers.

© Copyright 2003-2012 PORTRONIX communications inc. All Rights Reserved

"Service is more than just a word"™

PORTRONIX communications inc.
2831 Cropsy Ave. Brooklyn, NY 11214

Phone: (718) 372-2900
Email: info@portronix.com
www.portronix.com

PORTRONIX®